



**SKU # RS-D1(A3)**

**Part # 1004307**

Description

Discontinued - D1 (A3) 12V 35W Factory OEM Ballast Input 9-16V direct fits 2007-2019 BMWs

**Categories** HID & LED Headlights, HID Headlight Conversions

**Sub-Categories** HID Ballast and Bulb Parts, OEM Replacement Ballasts

**UPC** 814843025751

**Unit of Measure** EA

**Related Skus:**

**Cross Sell Skus:**

**Condition**

New

**Manufacturer**

Race Sport Lighting

**EZ Category**

OEM Replacement Ballasts

**Harmonization Code**

8512.20.2080

**Universal**

No

**Life Expectancy**

30,000 hours

**SEMA Product**

High Intensity Discharge Lighting Ballast

**Part Type ID**

15962

**Reverse Polarity**

High Intensity Discharge Lighting Ballast

**Operating Voltage**

**Current Draw**

**Wattage**

35-Watts

**Chip Type**

N/A

**IP Rating**

IP67

**LUX**

N/A

**Kelvin (ColorTemperature)**

N/A

**Universal or Vehicle Specific**

Vehicle Specific

**Made In**

CN

**Warranty**

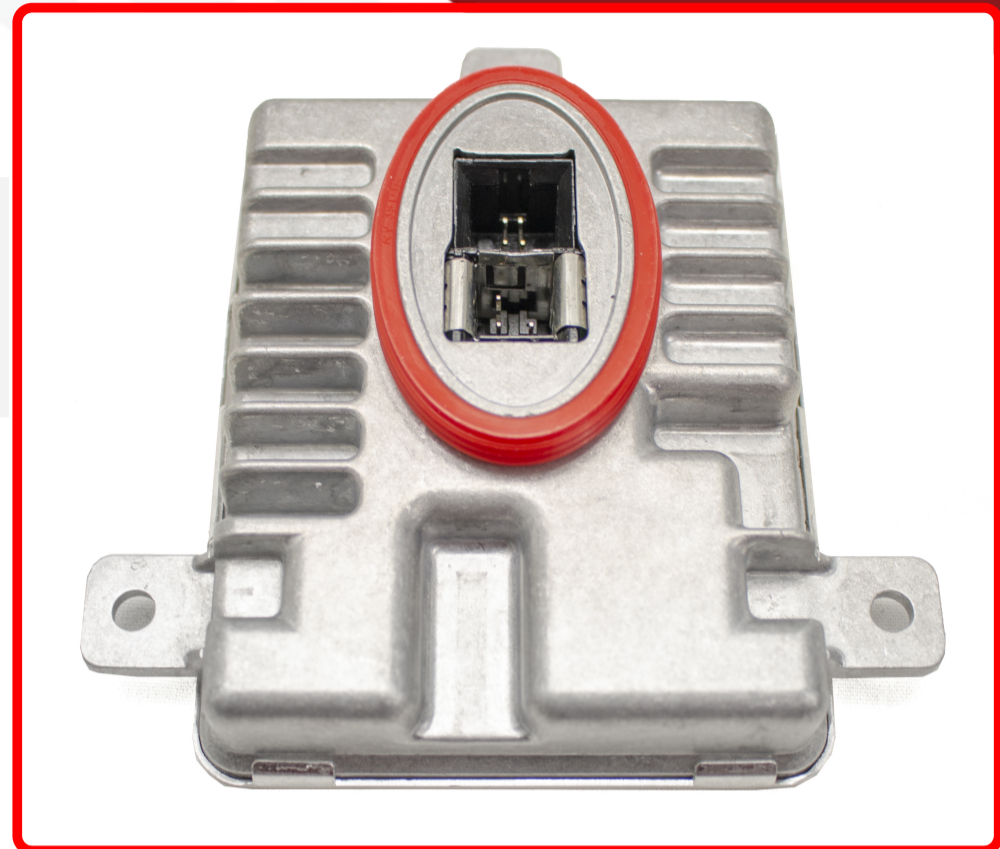
1 year

**Lumens**

N/A

**Beam Pattern**

N/A



**Product Information**

Whether you are looking to replace a failing OEM ballast or just looking to upgrade to a more reliable setup, Race Sport Lighting has you covered with vehicle specific OEM direct replacement ballasts. These ballasts are sold individually (Race Sport recommends replacing both ballasts) These ballasts meet all factory specifications and requirements. • 1 Year Warranty Fits the following vehicles 2009-2012 X1 Series PN# 63117237647 2009-2012 Z4 Series PN# 63126907488 2009-2012 BMW 3 Series Sedan and Wagons ONLY PN# 63117356250 2009-2012 BMW 7 Series PN# 63117356250 2009-2012 BMW K48 Motorcycle PN# 63 11 7 237 647 2009-2012 Rolls-Royce BMW 118i 2012-2019 BMW 220i 2014-2019 BMW 228i 2014-2016 BMW 230i 2017-2019 BMW 323i 2006-2011 BMW 325i 2007-2013 BMW 328i 2007-2012 BMW 328Xi 2007-2008 BMW 335D 2009-2011 BMW 335i 2007-2011 BMW 528i 2011-2016 BMW 535D 2014-2016 BMW 535i 2011-2016 BMW 535i GT 2010-2017 BMW 550i 2011-2018 BMW 550i GT 2010-2017 BMW 740i 2010-2019 BMW 740LD 2015 BMW 740LE 2

**Est. Labor**

Hours

**Gross Weight**

0.40

**Width**

4.75

**Net Weight**

0.40

**Height**

2.00

**DIM Weight**

0.43

**Depth**

6.25