



**SKU # RS-D1(M5)**

**Part # 1006675**

Description

D1(M5)12V 35W Factory OEM Ballast Input 9-16V Max Input Current 6.5A-88A fits most Acura / Honda / Mazda

**Categories** HID Headlight Conversions

**Sub-Categories** OEM Replacement Ballasts

**UPC** 817999025170

**Unit of Measure** EA

**Related Skus:**

**Cross Sell Skus:**

**Condition**

New

**Manufacturer**

Race Sport Lighting

**EZ Category**

OEM Replacement Ballasts

**Harmonization Code**

8512.20.2080

**Universal**

YES

**Life Expectancy**

**SEMA Product**

High Intensity Discharge Lighting Ballast

**Part Type ID**

15962

**Reverse Polarity**

High Intensity Discharge Lighting Ballast

**Operating Voltage**

**Current Draw**

**Wattage**

35-Watts

**Chip Type**

N/A

**IP Rating**

IP67

**LUX**

N/A

**Kelvin (ColorTemperature)**

N/A

**Universal or Vehicle Specific**

Universal

**Made In**

CN

**Warranty**

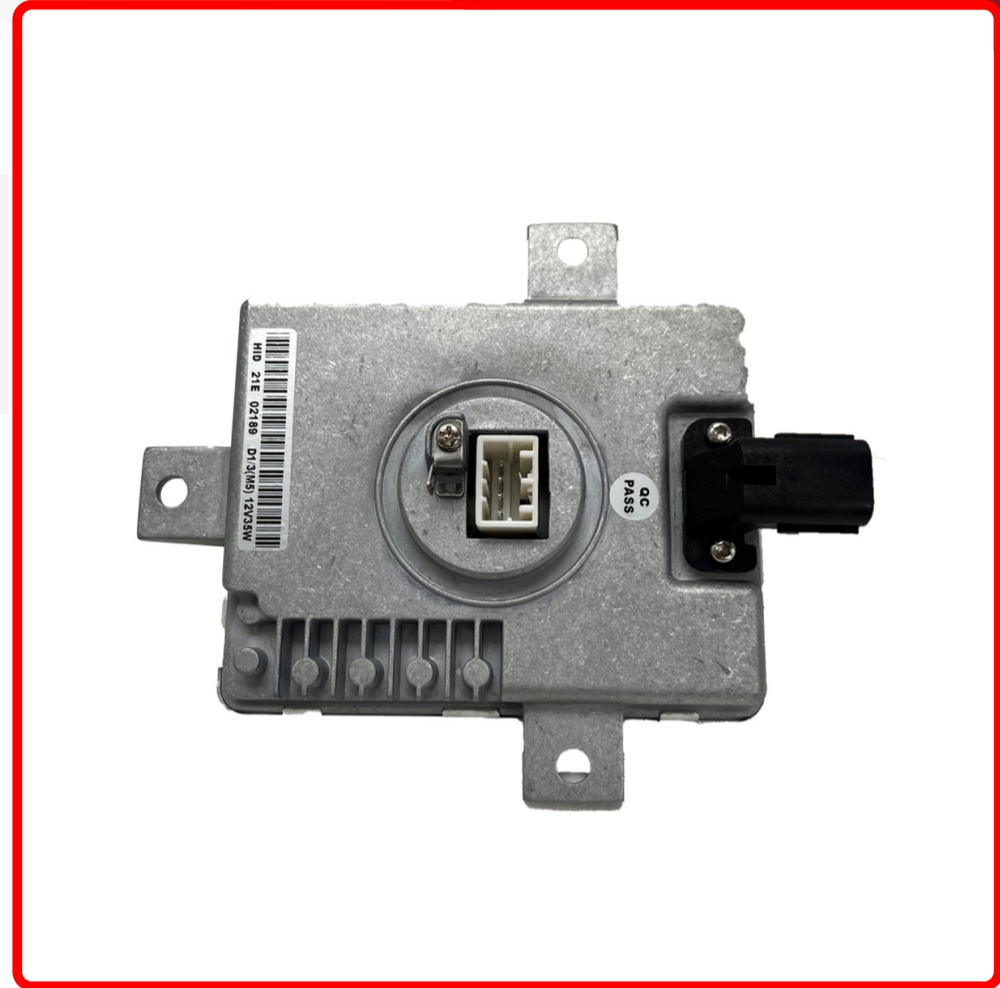
1 year

**Lumens**

N/A

**Beam Pattern**

N/A



**Product Information**

Whether you are looking to replace a failing OEM ballast or just looking to upgrade to a more reliable setup, Race Sport Lighting has you covered with vehicle specific OEM direct replacement ballasts. This High Intensity Discharge (HID) Control Module controls the current needed to ignite high intensity discharge headlight bulbs by increasing the voltage. Plug-and-play, direct-fit replacement ensures easy installation. These ballasts meet all factory specifications and requirements. Fits the following vehicles: 2005-2009 HONDA S2000 2000-2005 ACURA TL Replaces OEM Part # W3T10471 W3T12472 W3T14371 X6T02971 X6T02981 X6T02993

**Est. Labor**

Hours

**Gross Weight**

0.40

**Width**

4.75

**Net Weight**

0.40

**Height**

2.00

**DIM Weight**

0.43

**Depth**

6.25