



SKU # RSL7640

Part # 1007366

Description

MELT Series 4.3 INCH HEATED LENS LED FLOOD LIGHT 60W 7,200 RAW LUMENS

Categories LED Spots and Auxiliary Lighting

Sub-Categories Dual Function LED Spot Lights

UPC 817999029956

Unit of Measure EA

Related Skus:

Cross Sell Skus:

Condition

New

Manufacturer

Race Sport Lighting

EZ Category

MELT Series LED

Harmonization Code

8512.20.2080

Universal

YES

Life Expectancy

30,000 hours

SEMA Product Off-Road Light

Part Type ID 15431

Reverse Polarity

Off-Road Light

Operating Voltage

10-30VDC

Current Draw

4.5A

Wattage

60-Watts

Chip Type

OSRAM

IP Rating

IP67

LUX

88 LUX

Kelvin (ColorTemperature)

5,700K

Universal or Vehicle Specific

Universal

Made In

CN

Warranty

5 year

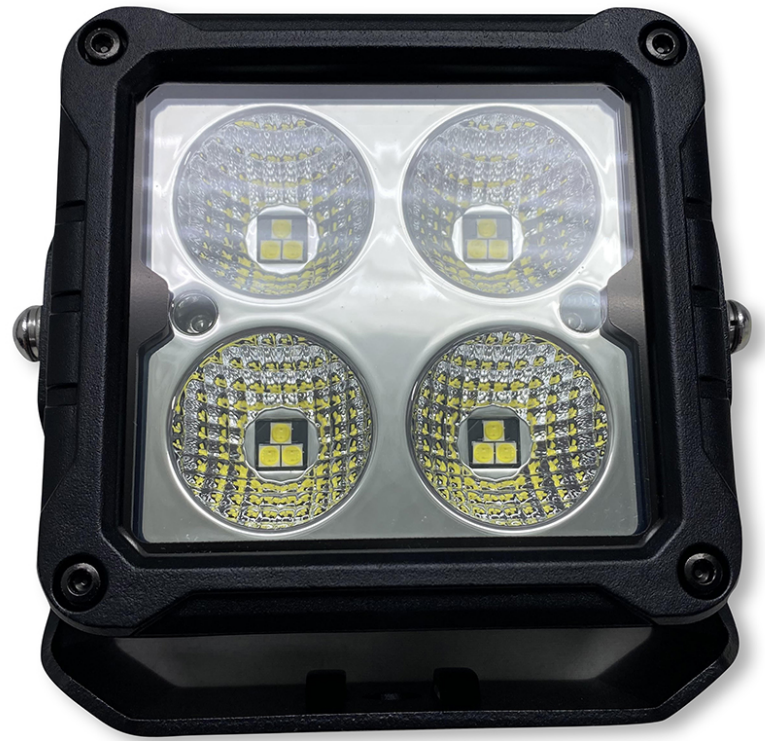
Lumens

7,200lm

Beam

Pattern

Spot



Product Information

Introducing the RSL7640 MELT Series 4.3 INCH HEATED LENS LED FLOOD LIGHT, a revolutionary lighting solution engineered to redefine visibility in challenging conditions. Boasting a powerful 60W output and an impressive 7,200 raw lumens, this flood light is a game-changer for those who demand reliability, durability, and superior performance. Features: . LED Power: 40.2-60W . Effective Lumen: 4045-4680.2lm . Raw Lumen: 7,200lm . LUX@10m: 88lx . Operating Voltage: 10-30V DC . Waterproof rate: IP 67 . 12pcs\*5w high intensity OSRAM LED P8 . Current draw: 4.46A @12V,2.23A@24V . Color Temperature: 5700k . Material: Diecast aluminum housing . Lens material: PC . Mounting Bracket: 304 stainless steel . Optional Beam: Flood 75° . LED Life-Span: 30,000 hours . Certificates: CE/RoHS/IP67 . With Temperature Control System . With manual-switch heating len

Est. Labor

Hours

Gross Weight

3.20

Width

6.50

Net Weight

3.20

Height

4.25

DIM Weight

1.14

Depth

5.75