



SKU # RSMB19MMR

Part # 1007590  
Description  
12V 19mm Momentary Function Pre-Wired Switch with RED LED and Black Flush Mount Finish Race Sport Lighting

Categories LED Switches

Sub-Categories Momentary Anti-Vandal Switches

UPC 810077231050 Unit of Measure EA

Related Skus:

Cross Sell Skus:

Condition New Manufacturer Race Sport Lighting EZ Category Flush Mount LED Switches

Harmonization Code 8512.20.2080 Universal YES Life Expectancy

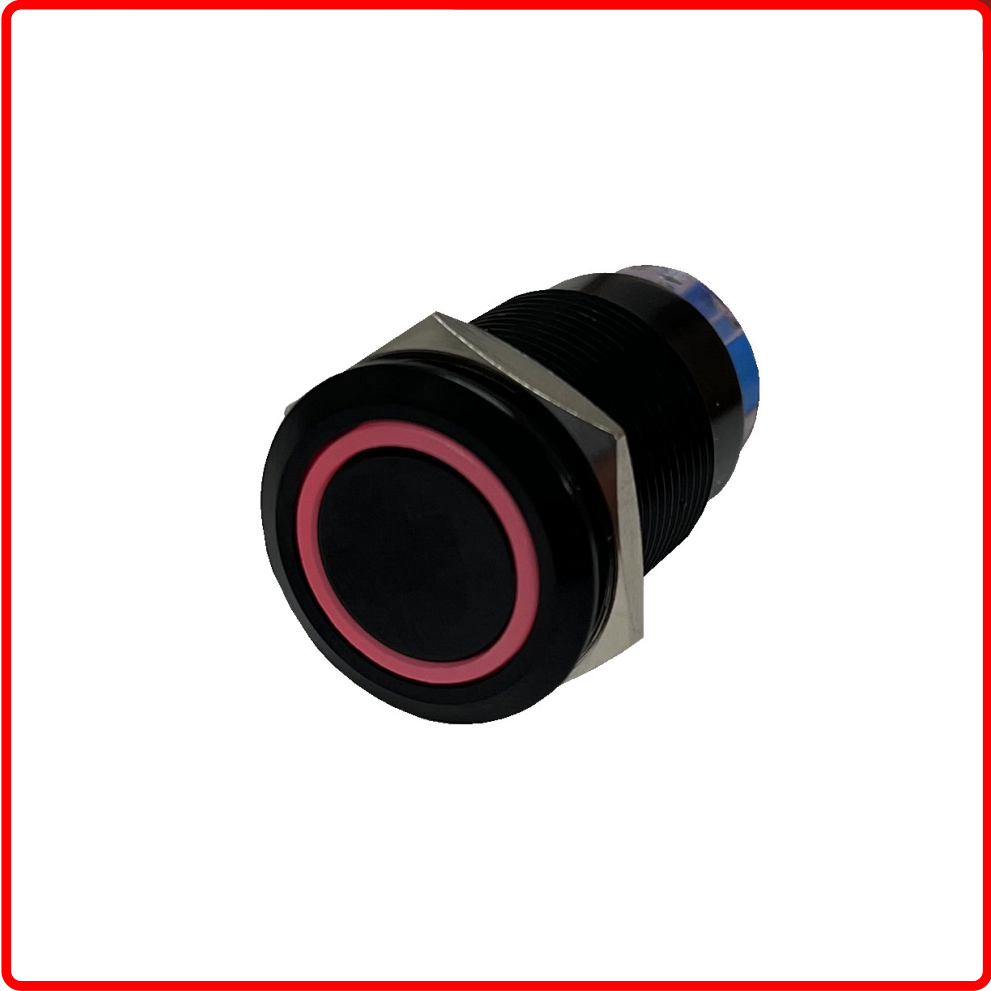
SEMA Product Momentary Push Button Switch Part Type ID 4576

Reverse Polarity Momentary Push Button Switch Operating Voltage Current Draw

Wattage Chip Type IP Rating LUX

Kelvin (ColorTemperature) Universal or Vehicle Specific Universal

Made In CN Warranty 1 year Lumens Beam Pattern



Product Information  
12V 19mm Momentary Function Pre-Wired Switch with RED LED Race Sport Lightings 19mm diameter flush mount switches are pre-wired for easy installation and allow users to do a momentary pulse on any 12V electrical circuit and activate a light or other component. When users take their finger off the button the spring loaded button will disengage the circuit and shut it off. Great for horns, displays, bright temp lights, etc...

Est. Labor	Hours		
Gross Weight	0.06	Width	2.75
Net Weight	0.13	Height	1.00
DIM Weight	0.09	Depth	4.75

Prop 65 WARNING: This product can expose you to chemicals, which are known to the State of California to cause cancer and birth defects or other reproductive harm. For more information go to [www.P65Warnings.ca.gov](http://www.P65Warnings.ca.gov)