



SKU # RSMB19MMY

Part # 1007587

Description

12V 19mm Momentary Function Pre-Wired Switch with YELLOW LED and Black Flush Mount Finish Race Sport Lighting

Categories LED Switches

Sub-Categories Momentary Anti-Vandal Switches

UPC 810077231203

Unit of Measure EA

Related Skus:

Cross Sell Skus:

Condition New

Manufacturer Race Sport Lighting

EZ Category Flush Mount LED Switches

Harmonization Code 8512.20.2080

Universal YES

Life Expectancy

SEMA Product Momentary Push Button Switch

Part Type ID 4576

Reverse Polarity Momentary Push Button Switch

Operating Voltage

Current Draw

Wattage

Chip Type

IP Rating

LUX

Kelvin (ColorTemperature)

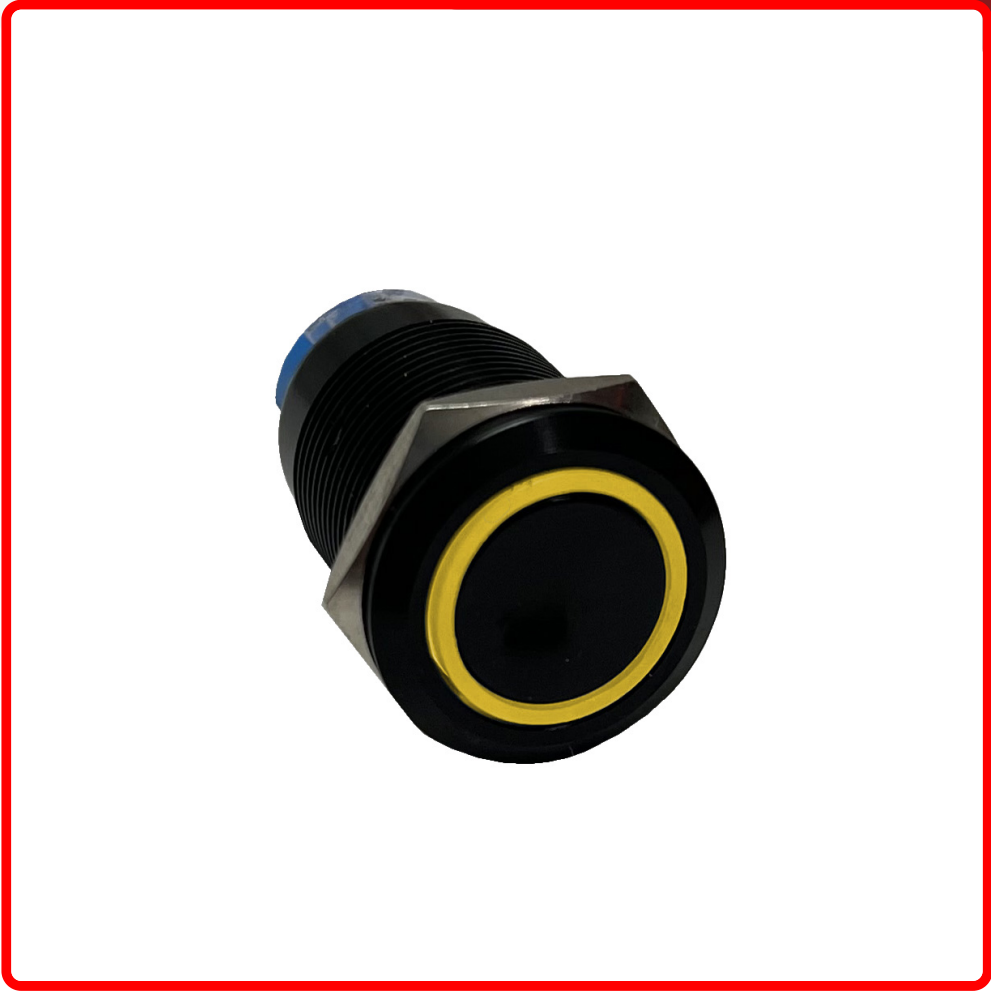
Universal or Vehicle Specific Universal

Made In CN

Warranty 1 year

Lumens

Beam Pattern



Product Information

12V 19mm Momentary Function Pre-Wired Switch with YELLOW LED Race Sport Lightings 19mm diameter flush mount switches are pre-wired for easy installation and allow users to do a momentary pulse on any 12V electrical circuit and activate a light or other component. When users take their finger off the button the spring loaded button will disengage the circuit and shut it off. Great for horns, displays, bright temp lights, etc...

Est. Labor	Hours		
Gross Weight	0.10	Width	2.75
Net Weight	0.01	Height	4.88
DIM Weight	0.10	Depth	1.06

Prop 65 WARNING: This product can expose you to chemicals, which are known to the State of California to cause cancer and birth defects or other reproductive harm. For more information go to [www.P65Warnings.ca.gov](http://www.P65Warnings.ca.gov)